

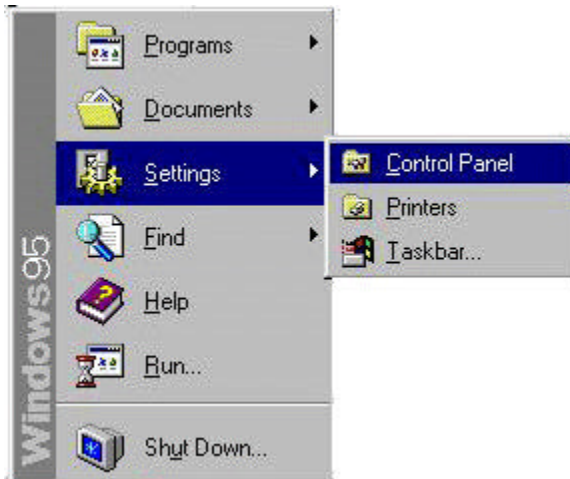


5250 Express Adapter Installation for Win95/98

This installation guide will take you through the process of installing your 5250 Express Adapter. Since you are here, we will presume that you have possibly already attempted an installation. This guide will assist you in removing that installation, building a new one, and testing your connection. **Please** do not skip any steps...

If you have **not attempted** to install the 5250 Adapter [Jump](#) to the installation section of this guide because you have no adapter to remove.

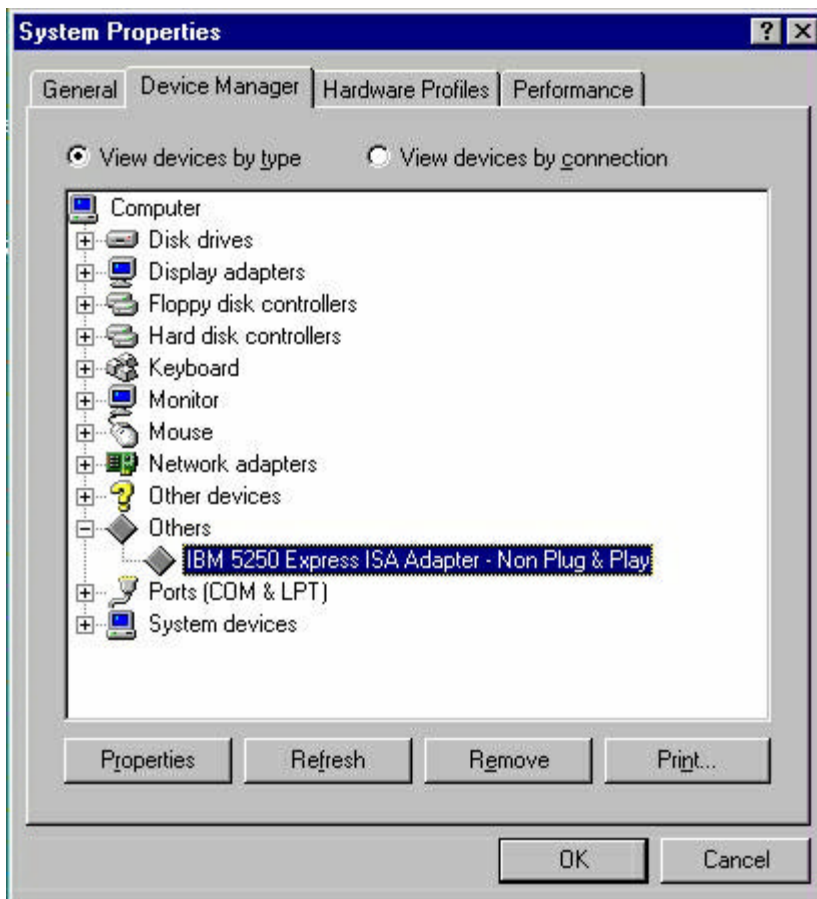
1. From the  menu, select "Settings", then select the "Control Panel."




2. When the control panel opens up select the "System" icon.
(near the bottom of the window)



3. Once the system properties window is open, select the second tab, "Device Manager."



4. Open the category called "Others".
5. In this category highlight the 5250 adapter and click the  button. When Windows asks "Are you sure you want to remove this device?" select yes and continue.
6. Close all the windows that are open on the desktop.

7. Right Click the  button, then select .

8. In Explorer select the "windows" folder from your hard disk.
9. Inside the windows folder select the "inf" folder. If you do not see the "inf" folder, select the drop down menu at the top of the windows explorer window called "View." View will be next to "File" and "Edit." With "View" selected, highlight the last option on the list, called "Options." This will bring up a new window called "Options." From the view tab, highlight the radio button next to the

words "Show all files." Select the "Apply" button on the bottom right hand side of the options window. Select the OK button when you are ready to close the window. You will now be able to view the "inf" folder.

10. Inside the inf folder there is another folder called "others." Open that folder and look for either "IBMIBM5250.INF" or "IBMALL5250.INF." If either of those files are in that folder, delete them.
11. Go back into the inf folder. Look for two files: drvdata.bin and drvidx.bin. Delete both of those files. Only delete files with the *.bin extension.
12. Scroll over to the files that start with the letter "o" in the inf folder. Look for files that start with OEM. They may not be there. If they are there, they will show up followed by a number. For example oem0, oem1, oem2. Open each one of these files and check for "5250" in the text. If 5250 is in the text of the oem file, delete that oem file. Check all the oem files because there may be more than one file with 5250 in it.
13. Close all windows and reboot the PC.
14. When windows restarts, it may find new hardware. If a "Windows has detected New Hardware" message appears, [Skip](#) to step 20.
15. If windows has not found new hardware, open the Control Panel.



16. Select "Add new hardware" from the control panel. This will start the Add New Hardware Wizard. On the first screen select "Next".



17. When prompted, "Do you want windows to search for new hardware?" **Select "NO."** Then select "Next." Windows will build a driver information database. This is normal for this procedure.



18. Once the driver information database has been created, select the hardware type "Others." Then Select "Next".



19. Put the first disk of the 2.04 adapter diskettes in the floppy drive. Select the

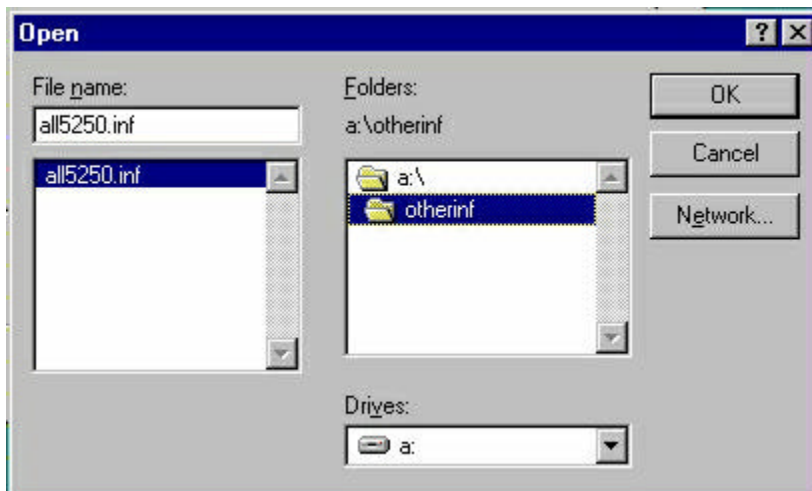


button.

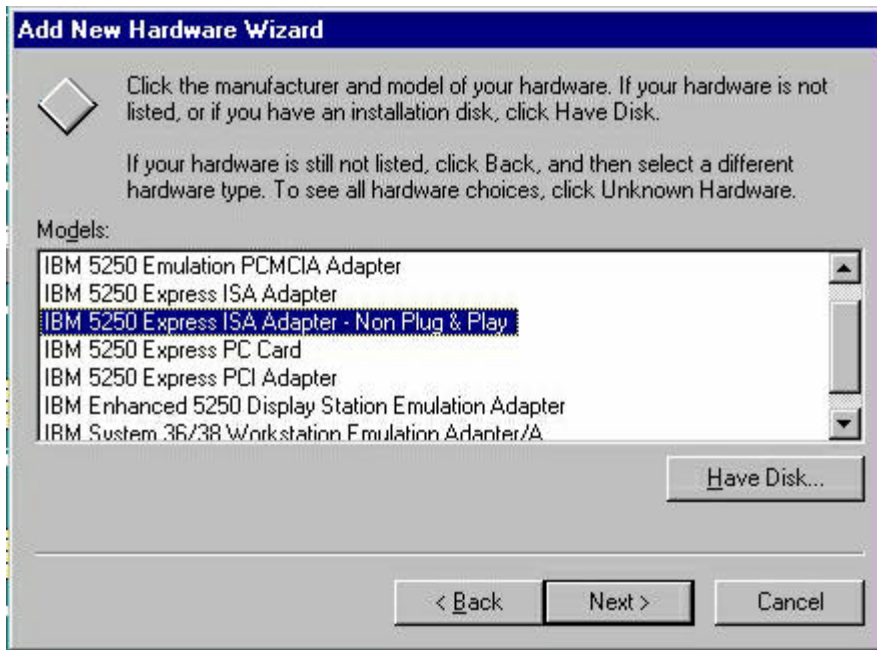
20. If you have an Express card, select the "OK" button from the "Install From Disk" window.



21. If you have an IBM 5250 card that is **not** an Express card, select the Browse button.
22. Double click on the folder "otherinf" until the file "all5250.inf" shows up as the file name. Then select "OK"



23. A list of IBM adapters will show up. Select your adapter then select the "Next" button.



24. Windows will then display a message that shows the resource settings at which the card can be installed. **Write them down** and select the "Next" button.
25. At the next window, select "Finish."
26. You will then be prompted to shut down your computer, close all other windows, eject the adapter diskette. Select the "Yes" button. Power down your PC and wait for about 10 seconds before restarting.
27. Upon restart, you might see a message (red screen) that informs you, "You have not yet installed support for your adapter." If you do, you need to install the support for your emulation software next.
28. From the start menu select the "Run..." command. At the prompt box, type "a:install."



29. The install program will now begin. Click "OK" on the first two INSTALL messages.
30. At the third message, remove disk one and insert disk two. Then click "OK".
31. On your first "Select Options:" window, select the continue option. Click "OK."
32. On your second "Select Options:" window, select the adapter card you are using, then click "OK."
33. On your third "Select Options:" window, select the support package you want to install. For example, if you are using Client Access, select the "Support for Client Access" option, etc.
34. You will be informed on your next window of the options you have chosen. Review them and if they are correct, select the "Yes" option. Click "OK."



35. You will be informed of the changes that will be made to your PC, including some files that may be updated. Select the "Install Support Now" option and click "OK."
36. The next INSTALL message will confirm that "The support you have chosen has been successfully installed." Click "OK." Then Click "OK" again to exit.



37. Eject the adapter diskette and restart your PC.
38. Attempt to connect using your software emulation package.
39. If no connection is made select the link below that corresponds to your adaptor type:
 - ISA Express Adapter [Plug-and-Play](#) Mode
 - ISA Express Adapter [non Plug and Play](#) Mode
 - [Enhanced](#) Display Station Emulation Adapter (Legacy ISA 5250 Card)
 - [PCI Express](#) Adapter

- [PC Card Express](#) (Credit Card Adapter)
-



[IBM 5250 Emulation Home Page](#)

▶ IBM Home	▶ ORDER	▶ EMPLOYMENT	▶ CONTACT IBM	▶ LEGAL
▶ EXPRESS	▶ TCP/IP	▶ 5308	▶ 6299 / 7299	▶